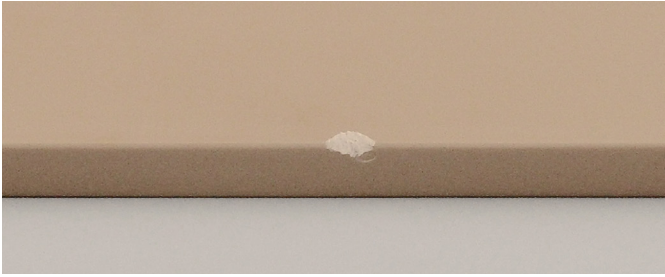
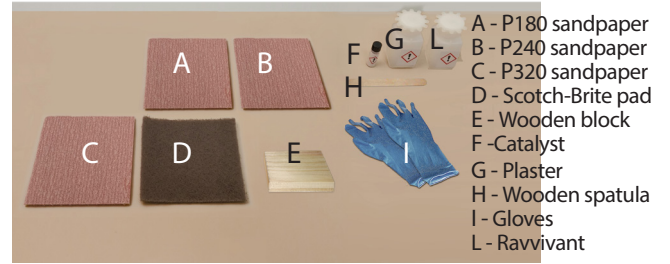


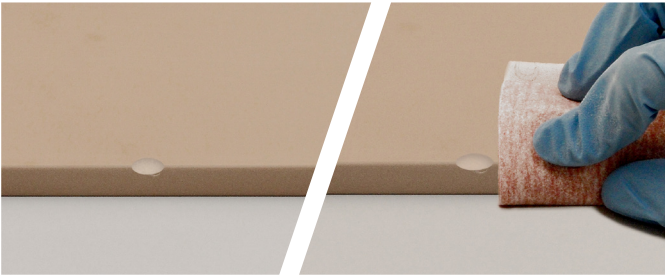
## RESTORING A CHIPPED SURFACE (COLOR) - (cod. KIT12RS)



**1.** Chipped area.



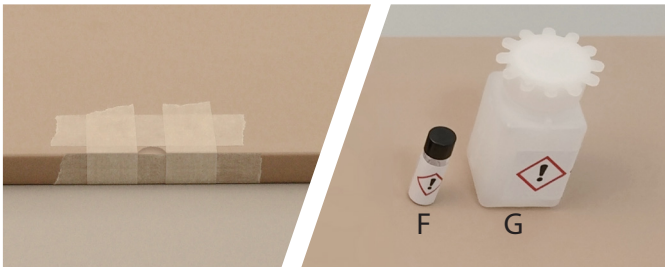
**2.** Restore kit content.



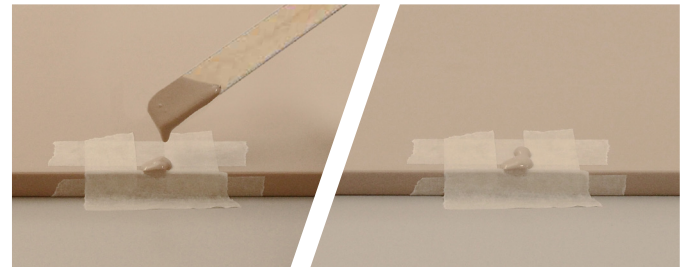
**3.** Widen the chipped area with the wooden block (E) and 180-grit sandpaper (A) in order to smooth the surface and remove all small cuts. Polish the surface next to the damaged area with 320-grit sandpaper (C).



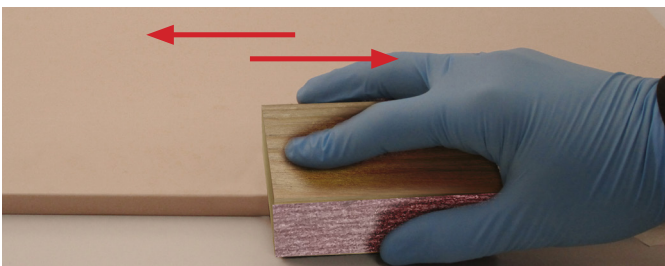
**4.** Remove dust and clean the surface with acetone or alcohol.



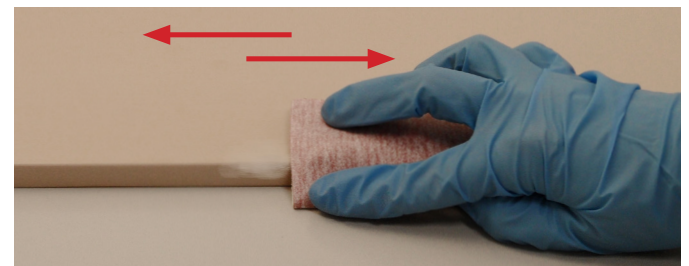
**5.** Cover the area to be repaired with masking tape. Pour the catalyst (F) into the plaster (bottle G), and stir with the wooden spatula (H) until blended.



**6.** Cover the area to be repaired with a plentiful layer of product with the wooden spatula (H). Let it dry for 24hours at a minimum temperature of 15/18°C. Do not wet the surface.



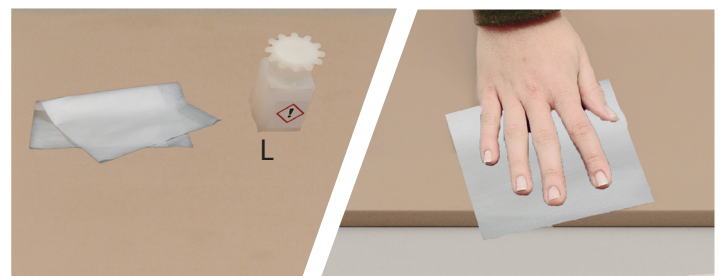
**7.** Sand the excess with the wooden block (E) and the surface with P180 sandpaper (A) until the surface gets smooth. Go on sanding the surface with the wooden block (E) and P240 sandpaper (B) to finish the surface.



**8.** Sand the surface with P320 sandpaper (C) following the direction shown above to repair the surface completely.



**9.** With a Scotch-Brite pad (D) wipe the surface in the direction shown above to make it matt. The surface will be thus restored.



**10.** By using a small size cloth, spread on the surface some Reviving (L) product, evenly. Wait a few seconds, then swipe off the excess product to avoid sticky surface films.